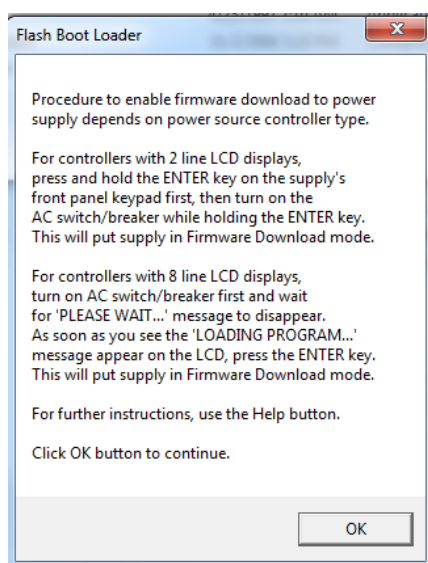


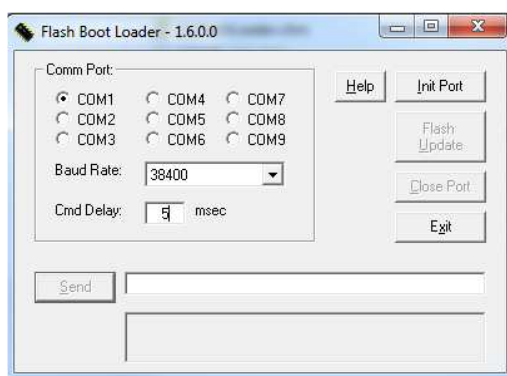
# Installation Guide for California Instruments CSW Firmware

## Installation Instructions

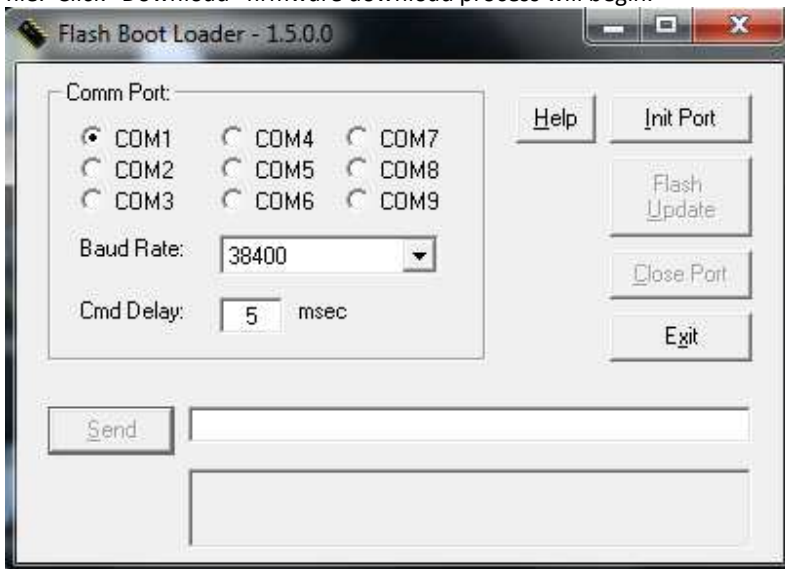
1. Navigate to <http://www.programmablepower.com/ac-power-source/CSW/Downloads.htm>
2. Download and install Flash Loader V1.6.0. Follow the onscreen instructions. Click OK.



3. The following Flash Boot Loader window will appear below:



4. Select the proper Comm Port configured on your system. Baud Rate set to 38400 and Cmd Delay set to 5 msec. Click "Init Port". If connection is successful "Flash Update" will become clickable. Click "Flash Update" then click Browse and select firmware "\*.hex" file. Click "Download" firmware download process will begin.



California Instruments Product Support:

On-Line Request:

[www.programmablepower.com/support/support\\_CallInst.htm](http://www.programmablepower.com/support/support_CallInst.htm)

Direct: [ci.ppd@ametek.com](mailto:ci.ppd@ametek.com)

Phone: 800-733-5427